

NOTE: DO NOT DISCARD the Parts List from the Instruction Bulletin. Place the Parts List in the appropriate place in the machine manual for future reference. Retaining the Parts List will make it easier to reorder individual parts and will save the cost of ordering an entire kit.

NOTE: Numbers in parenthesis () are reference numbers for parts listed in Bill of Materials.

Installation instructions for **kit number N/A**

SYNOPSIS:

This Instruction Bulletin provides instructions to add a 1.50" drain hole to the cyclone cover. Please follow step-by-step instructions.

SPECIAL TOOLS / CONSIDERATIONS: 1.50" hole saw
(Estimated time to complete: 20 minutes)



PROTECT THE ENVIRONMENT

Please dispose of packaging materials, old machine components, and hazardous fluids in an environmentally safe manner according to local waste disposal regulations.

Always remember to recycle.

PREPARATION:

1. Park the machine on a clean level surface, turn off the machine, remove the key, and set the parking brake.

FOR SAFETY: Before leaving or servicing machine, stop on level surface, turn off machine, and remove key.

2. Disconnect the battery cables from the battery.

WARNING: Always disconnect battery cables from machine before working on electrical components.

3. Open the hopper cover and lock the cover completely open.

INSTALLATION:

NOTE: Label vacuum hoses with locations before disconnecting them from the hopper filter cover / cyclone assembly cover. The hoses must be reconnected to the proper locations for the machine to function properly

1. Disconnect the vacuum hoses and the main wire harness from the hopper assembly. (Fig. 1)

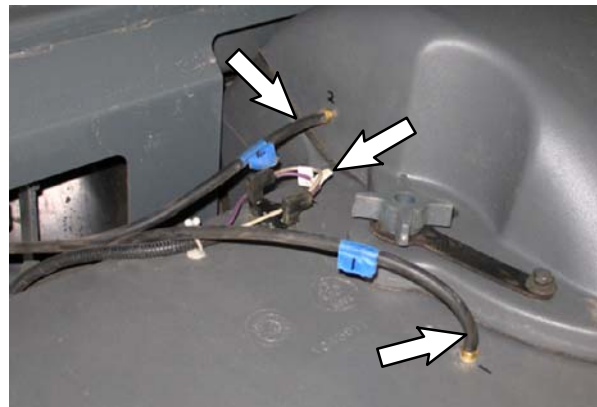


FIG. 1

2. Remove the filter cover from the hopper assembly. Set the filter cover aside.
3. Remove the filter from the hopper assembly. Set the filter aside.

4. Remove the cyclone cover from the cyclone assembly and position cyclone cover as shown in Fig. 2.

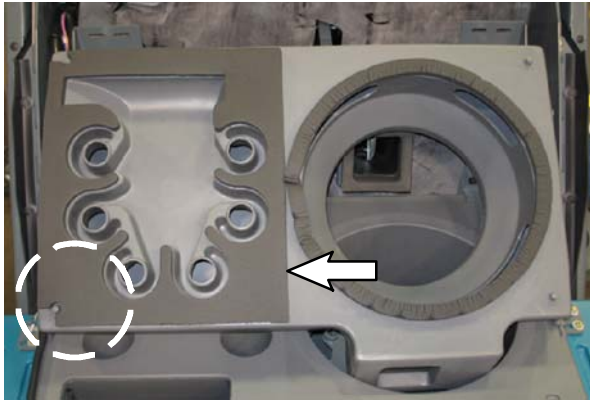
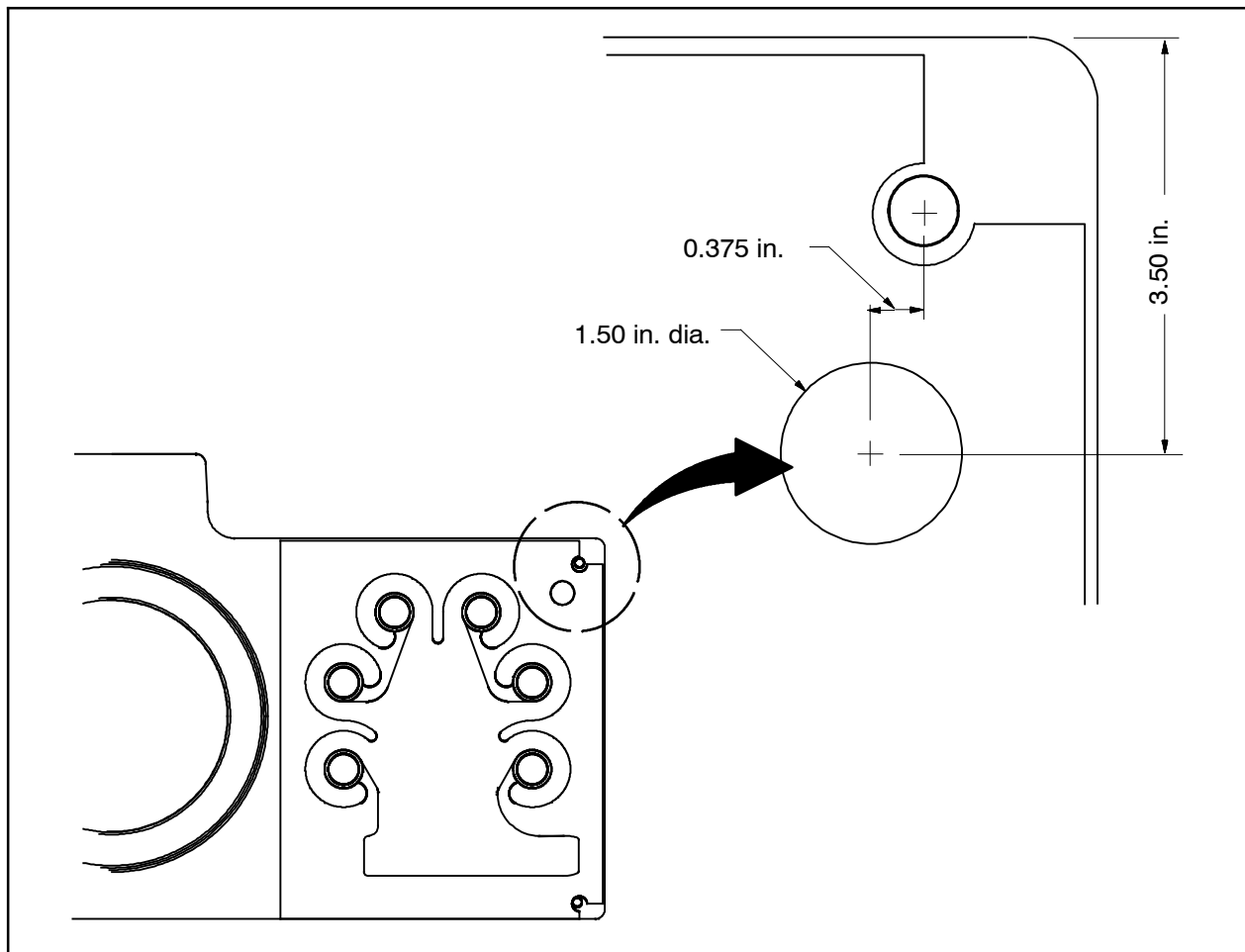


FIG. 2

5. Use a 1.50" hole saw to cut a hole through the gasket and the bottom of the cyclone cover. **Do not** cut into the top of the cyclone cover. (Fig. 2 / Fig. 3)
6. Reinstall all components removed from the hopper. Reconnect all hoses and electrical connections.
7. Reconnect the battery cables to the battery.



TENNANT COMPANY
P. O. Box 1452
Minneapolis, MN 55440-1452